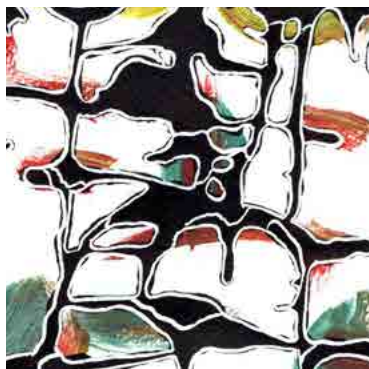


Catalogue 2020



1er rang - de gauche à droite: Didier Genty, Flo Arnold, Tana Chaney, Elisabeth Daynès
2ème rang - de gauche à droite: Arghaël, Cedric Le Corf, Christophe Miralles, Paul de Pignol



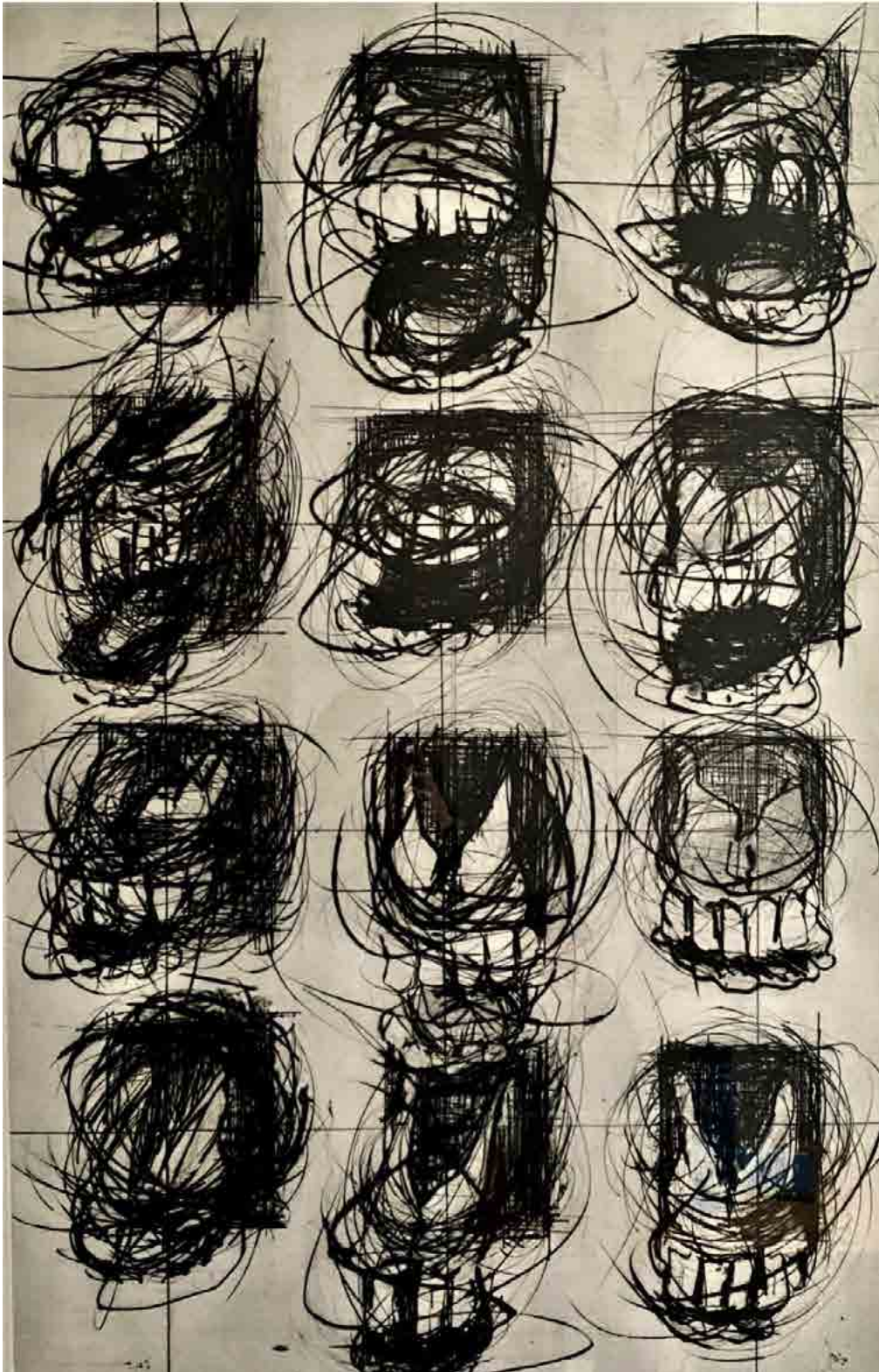
Série *Vanité* (2013-2017)
Oil on canvas
30 x 30 cm
880 euros each



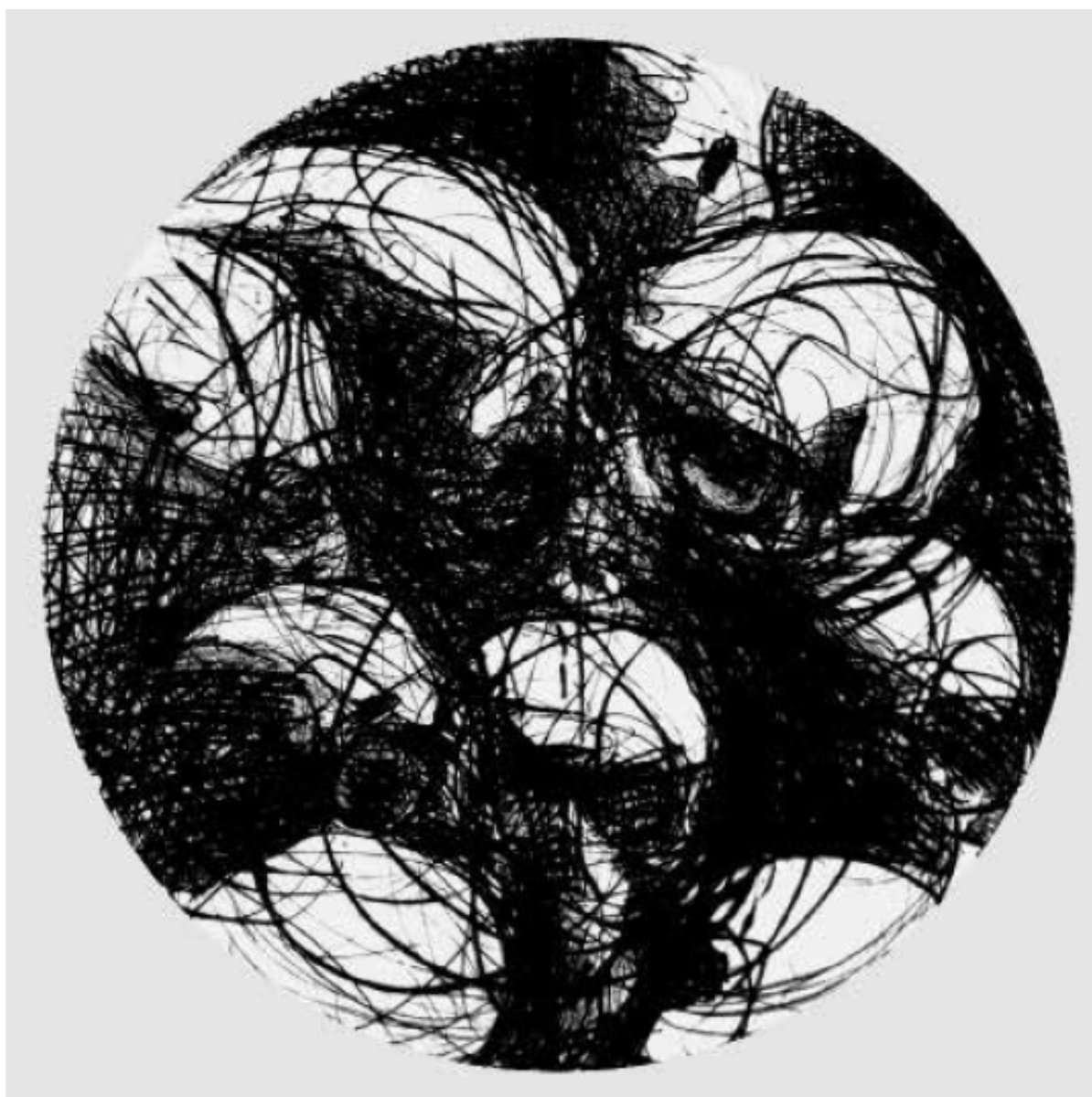
Vanité 2 (2013)
Oil on canvas
30 x 30 cm
880 euros



Justa 4 (2018)
Drypoint etching
76 x 106 cm
880 euros



Mâchoires (2014)
Drypoint etching
95 x 65 cm
900 euros



Ossuaire (2019)
Drypoint etching
Diameter 44 cm
880 euros



Le vexin II, hommage à Corot (2018)

Drypoint etching

70 x 84 cm

660 euros



Le vexin III, hommage à Corot (2018)

Drypoint etching

70 x 84 cm

700 euros



La mare au diable I (2017)
Drypoint etching
50 x 40 cm
800 euros

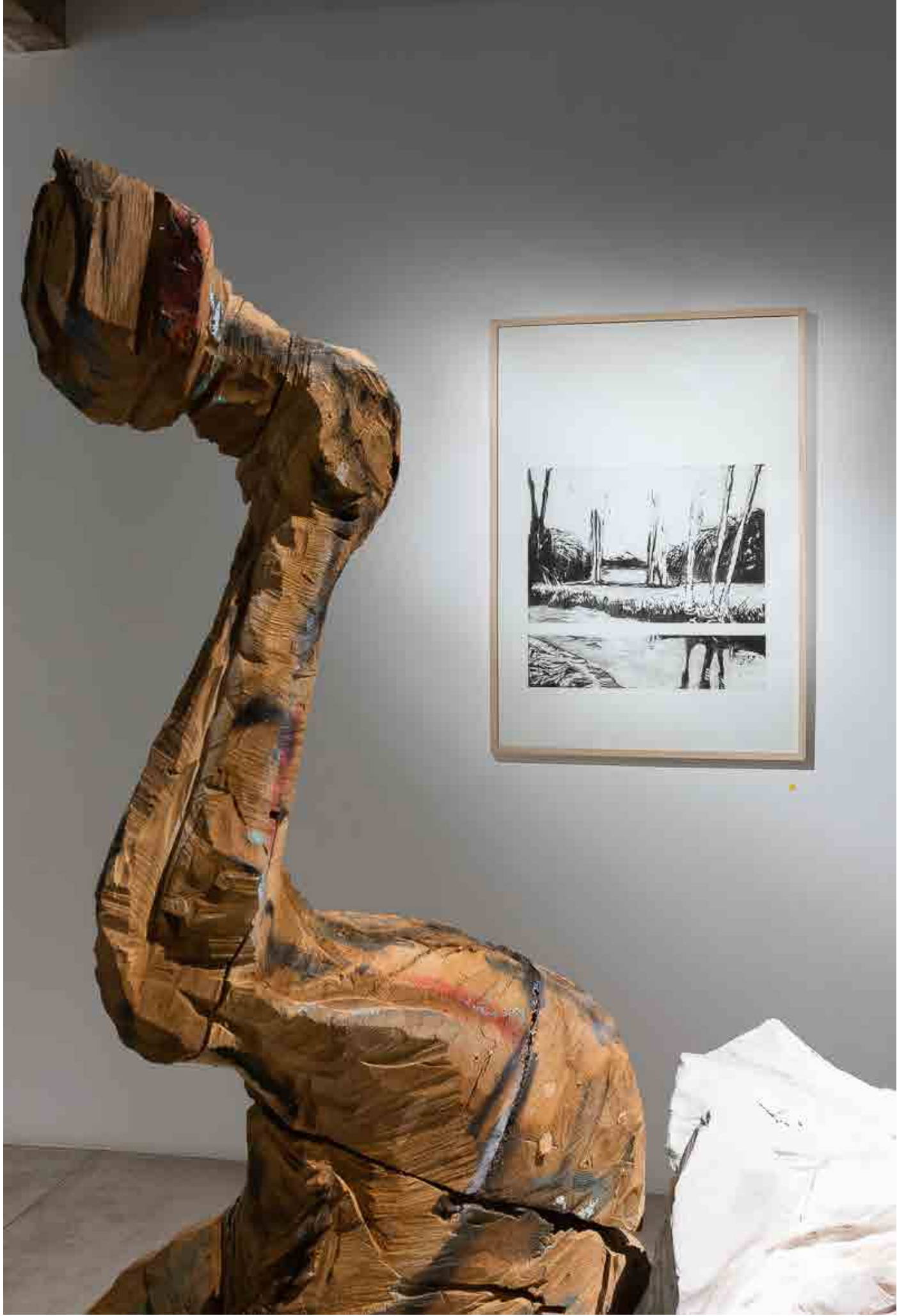


La mare au diable II (2017)

Drypoint etching

50 x 40 cm

800 euros



View of the exhibition Péninsules, Loo and Lou Gallery — Haut Marais, 2020 / Image: Emilie Mathé Nicolas



Kermouzouet 1 (2018)

Drypoint etching

60 x 50 cm

660 euros



Kermouzouet 2 (2018)
Drypoint etching
60 x 50 cm
660 euros



Kermouzouet 3 (2018)
Drypoint etching
60 x 50 cm
660 euros



Kermouzouet 4 (2018)

Drypoint etching

60 x 50 cm

660 euros



Kermouzouet 5 (2018)

Drypoint etching

60 x 50 cm

660 euros



Views of the exhibition *Péninsules*, Loo & Lou Gallery - Haut Marais, 2020 / Image: Emilie Mathé Nicolas

Cedric Le Corf

Cedric Le Corf was born in 1985 in Bühl (Germany). He graduated with honors from the École Européenne Supérieure d'Art de Bretagne in Lorient (France) in 2009. Today, he lives and works in Brittany.

The subject of his work lends itself to anatomical landscapes inspired by Jacques Fabien Gautier d'Agoty's boards, where little by little, a dismembered man is transformed into a landscape of a man. Humans, trees, and the earth all possess in common a kind "skin" and with it the ability to be flayed. Is it untrue to think that a dissected body is merely a wide range of landscapes, full of mishaps, folds, and crevices? The coarseness of bone is reminiscent to the rocky landscapes of Patinir; the venous, arterial, or nervous network irrigates like rivers, plains, and estuaries; the muscles, the clay of Genesis, model gorges and mounds.

Following this metaphor, he uses plant roots as a landscape element to interlock bones, vertebrae, or joints made of porcelain. The root, in its etymological sense, is one element implanted inside another, much like the root of a tooth, a hair, or the dorsal root of a spinal nerve. It therefore juxtaposes a raw element of chaos with the mastery of creation; from roughness to polish, from decomposition to the inalterable, from the durability of art to the ephemeral man. Imbued with the Rhineland and Armorican heritage, confronted with the pathos of Grünewald (Baldung Grien), the hanged men within "Des misères de la guerre" by Jacques Callot at "l'Ankou", along with the macabre dances of Kernascléden where the animate and the inanimate are mixed, to the horror of the mass graves of Sobibor, Le Corf tries, by attaching himself to these motifs, to deafen the subject that his work contains.



Selected Exhibitions (excerpts)

Péninsules

Loo & Lou Gallery
Paris, France
2020

Art Paris (Fair)

with Loo & Lou Gallery
Grand Palais
Paris, France
2020

Itinérance

Académie de France
Paris, France
2020

VIVA VILLA

Group Exhibition
Lambert Collection
Avignon, France
2019

Itinérance

ArtsLibris, ARCO (Fair)
Casa de Velázquez stand,
IFEMA, Madrid
Casa de Velázquez,
Exhibition and open artist
studios
Académie de France
Madrid, Spain
2019

L'Âme du lieu

Group Exhibition
Château de Keroüartz
Lannilis, France
2019

Engagée aux côtés de jeunes talents et d'artistes reconnus, la galerie Loo & Lou inaugure ses deux espaces en juin 2015. L'un dans le Haut-Marais, rue Notre-Dame de Nazareth, l'autre près des Champs-Élysées, avenue George V. Ces espaces offrent à la galerie la liberté de confronter différents points de vue artistiques, de proposer des approches distinctes et parfois expérimentales d'une œuvre ainsi qu'initier des dialogues entre artistes. Ils lui donnent également une plus grande latitude pour développer une conversation entre publics, plasticiens et commissaires indépendants.

En 2017, la galerie se dote de L'Atelier, un nouvel espace jouxtant celui du Haut-Marais qui permet d'apporter une proposition complémentaire à l'exposition en cours, (performances, work in progress), offre la possibilité d'un deuxième temps d'exposition à des œuvres déjà présentées et constitue également le lieu d'exposition pour de jeunes artistes.

En 2018, elle ouvre un nouveau volet de sa programmation : les « Cartes Blanches » offertes à des curateurs indépendants ou institutions viennent souligner son inclination à s'ouvrir sur l'extérieur pour dialoguer, découvrir de nouvelles approches et de nouveaux artistes.

La galerie Loo & Lou déploie son activité à travers une direction artistique ouverte à toutes disciplines et nourrie d'inspirations diverses. Sa programmation trouve sa cohésion dans un choix d'artistes souvent portés par une réflexion sur l'exploration du vivant, corps et portraits, et inspirés également par le thème de la nature.

Committed alongside acknowledged artists and those on the rise, Loo & Lou Gallery opened in June 2015 with two exhibition spaces: one in the Haut-Marais, rue Notre-Dame de Nazareth and one near the Champs-Élysées, Avenue Georges V in Paris, France. These spaces give Loo & Lou Gallery an opportunity to confront different visions and offer a variety of experimental approaches to art, allowing for flexibility and creating a dialogue between the audience, artists, and independent curators.

In 2017, the gallery opened a new space adjacent to the Haut-Marais space called "The Atelier." This gallery gives a second life to past exhibitions and artworks, complements the current exhibition, is a space for performances and "works in progress", and is also a space dedicated to young artists.

In 2018, a new addition was made to the program, the "Carte Blanche," which is offered to independent curators or institutions to present up-and-coming artists and their unique approaches.

Loo & Lou Gallery is engaged in an artistic direction that is open to every medium and is nourished by various aspirations. Its program finds cohesiveness in their roster of artists who are focused on the exploration of the living, the body, and portraits, and are also inspired by nature.

